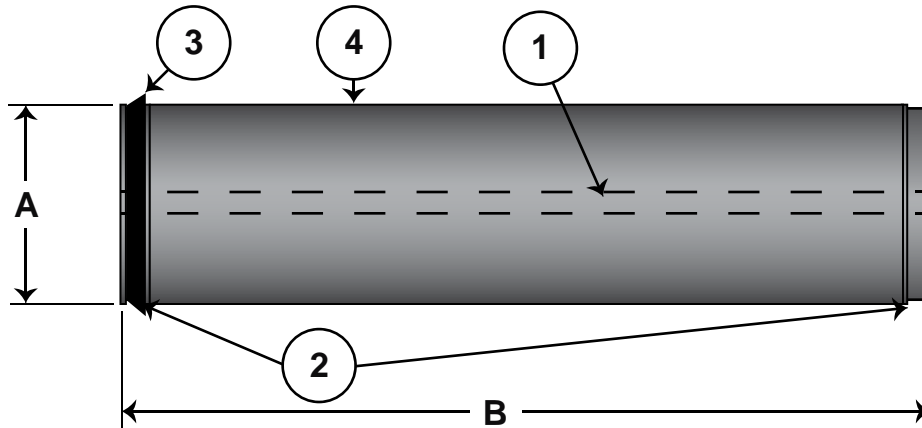


7940 OsR UF Membrane

Engineered for Electrocoat Applications



ITEM	DESCRIPTION
1	Permeate Tube
2	ATD
3	Brine Seal
4	Membrane Body

Description

PVDF500-7940F-31-1139
PVDF Spiral Membrane
FRP Outer Wrap
One End Seal — ATDs both ends

Dimensions

Diameter (A) 7.90" (201 mm)
Overall Body Length (B) 40.0" (1,016 mm)
Permeate Tube ID 1.139" (28.9 mm)
Membrane Area 325 ft² (30.2 m²)

Recommended Operating Parameters

Feed 110 - 125 GPM (416 - 473 LPM)
Inlet Pressure 50 PSI (3.4 bar)
Outlet Pressure 20 PSI (1.4 bar)
Permeate Output A/C* 4.6 - 2.9 GPM (17 - 11 LPM)
Max Temperature 120°F (49°C)
Max pH Range 2-11 operating
1-12 cleaning

*Note: Anodic and Cathodic permeate output will vary depending on system design and paint bath chemistry.

